

# STONENERGY

by BRM

CATALOGUE



Rua João Chagas Ortins de  
freitas, 577  
Sala 1314  
Lauro de Freitas-BA, Brasil  
42710-610

*We are happy to  
meet you*



Directly from the land of  
natural riches, we are  
concerned with bringing  
the best 100% natural  
minerals to you or your  
business in an agile and  
easy way!



# AMETHYST

Amethyst is the most appreciated variety of quartz. Your crystals always grow on a base. When shaped like pyramids, the most intense color predominates at the tips of the crystals. There are some varieties of amethyst that can have white bands of milky quartz, as well as a violet color in the middle of the crystals.

Amethyst is a violet colored stone that relates to the Sage and Wise Woman symbol, and also facilitates the shift from a normal or waking state of consciousness to a meditative state.



ROOT POINTS A

PERFECT POINTS

MONTH PRODUCTION:  
1000KG



ROOT POINTS B

FOR LAPIDARY

MONTH PRODUCTION:  
200KG





# AMETHYST

## ROOT POINTS SMALL

MONTH PRODUCTION:  
150KG



## DRUSES A

MONTH PRODUCTION:  
1000KG



## DRUSES B, C

MONTH PRODUCTION:  
100KG



## GEMS

MONTH PRODUCTION:  
ON DEMAND



# RUTILATED QUARTZ

Rutilated quartz is a form of quartz that is characterized by the presence of “needles” or threads of rutile in the quartz crystal structure. Rutile is a titanium dioxide mineral and sometimes contains large amounts of iron oxide. When the iron oxide content is high, rutilated quartz may have golden and red needles, and when the content is lower, it may have a darker, almost black color. This variety of crystal has a powerful vibrational energy that promotes happiness and prosperity in its wearer, in addition to opening the most difficult paths and helping to overcome great difficulties, due to its intense energetic property, rutile quartz reorganizes the cells of the body, benefiting it. completely, being therefore very useful in the treatment of various diseases such as those linked to the area of psychology.



NATURAL POINTS  
FOR LAPIDARY

**80% CLEAR / 20% CLOUDED**

MONTH PRODUCTION:  
250KG

NATURAL SPECIMENS, WITH DAMAGE



EXTRAORDINARY

**100% CLEAR**

MONTH PRODUCTION:  
UNSTABLE

HAMMERED FOR LAPIDARY or NATURAL SPECIMEN





# RUTILATED QUARTZ

A, AA, AAA

A - 60% CLEAR  
AA - 80% CLEAR  
AAA - 95% CLEAR

MONTH PRODUCTION:  
A - 5000KG  
AA - 2000KG  
AAA - 100KG

HAMMERED FOR LAPIDARY



B, BB, BBB

B - 100% CLOUDED  
BB - 80% CLOUDED  
BBB - 60% CLOUDED

MONTH PRODUCTION:  
10000KG

HAMMERED FOR LAPIDARY



C

100% CLOUDED

MONTH PRODUCTION:  
20000KG

HAMMERED FOR LAPIDARY



DRUSY

80% CLEAR / 20% CLOUDED

MONTH PRODUCTION:  
1000KG

NATURAL SPECIMENS, 90% NO DAMAGE



# CLEAR QUARTZ

In general, clear quartz crystal is widely used as an energy amplifier, mainly in tip form. It acts as a purifier and tunes the energy of each individual or even the environment. Quartz is a mineral formed by the combination of oxygen and silicon. This mineral is found in almost all igneous, metamorphic and sedimentary rocks, in addition to being one of the main components of granite. It has also been found in meteorites and in some rocks collected on the Moon. This multicolored crystal is easily found throughout Brazil, but specifically and especially in the states of Minas Gerais, Goiás and Bahia, its abundance is greater, because that is where the largest deposits.



NATURAL  
POINTS LARGE

80% CLEAR / 20% CLOUDED

MONTH PRODUCTION:  
2500KG  
NATURAL SPECIMENS, WITH DAMAGE



NATURAL  
POINTS SMALL

80% CLEAR / 20% CLOUDED

MONTH PRODUCTION:  
5000KG  
NATURAL SPECIMENS, WITH DAMAGE



# CLEAR QUARTZ

A

80% CLEAR

MONTH PRODUCTION:  
2500KG

HAMMERED FOR LAPIDARY



B

80% CLEAR

MONTH PRODUCTION:  
5000KG

NATURAL SPECIMENS, WITH DAMAGE



C

50% CLEAR

MONTH PRODUCTION:  
10000KG

NATURAL SPECIMENS, 90% NO DAMAGE



DRUSY N POINTS  
COLLECTIONS

A70% CLEAR / 30% CLOUDED

MONTH PRODUCTION:  
1000KG

NATURAL SPECIMENS, 90% NO DAMAGE





# SMOKY QUARTZ

Smoky quartz is a light brown to black variety of quartz. These colors are due to radiation emitted by radioactive minerals or the presence of organic matter. When heated it can convert to citrine. In antiquity, this variety of quartz was thought to have smoke inside, hence its name. For centuries it was one of the most cut and sought after gemstones, but today it is a magical gem. The world's largest producer of this gem is Brazil, with Madagascar, Russia, Scotland, Switzerland and Ukraine also standing out.



NATURAL  
POINTS LARGE

80% CLEAR / 20% CLOUDED

MONTH PRODUCTION:  
2500KG

NATURAL SPECIMENS, WITH DAMAGE



NATURAL  
POINTS SMALL

80% CLEAR / 20% CLOUDED

MONTH PRODUCTION:  
5000KG

NATURAL SPECIMENS, WITH DAMAGE



# CLEAR QUARTZ

A

80% CLEAR

MONTH PRODUCTION  
2500KG

HAMMERED FOR LAPIDARY



B

80% CLEAR

MONTH PRODUCTION:  
5000KG

NATURAL SPECIMENS, WITH DAMAGE



C

50% CLEAR

MONTH PRODUCTION:  
10000KG

NATURAL SPECIMENS, 90% NO DAMAGE



DRUSY N POINTS  
COLLECTIONS

70% CLEAR / 30% CLOUDED

MONTH PRODUCTION:  
1000KG

NATURAL SPECIMENS, 90% NO DAMAGE



# BLUE QUARTZ

Blue quartz or sapphire quartz is a variety of blue colored quartz. The blue color is due to titanium. It often has rutile or crocidolite inclusions. Blue quartz can vary from navy blue to light blue colors. Blue Quartz organizes the mind, helps to have more self-discipline and awakens in us a feeling of courage, self-love and self-confidence.



UNIQUE  
QUALITY

70% BLUE WITH STRIPES

MONTH PRODUCTION:  
20000KG



TROLLITA

80% CLEAR

MONTH PRODUCTION:  
ON DEMAND





# SODALITE

Sodalite is a rare mineral with a generally blue or violet-blue color, widely used as a gemstone and in ornamental objects. It can also be gray, yellow, green or pink and is often stained with white, which diminishes its value. It is cut in cabochon or in the form of beads. Translucent, very rarely transparent.



A

MONTH PRODUCTION:  
ON DEMAND



B

MONTH PRODUCTION:  
ON DEMAND



C

MONTH PRODUCTION:  
ON DEMAND



# PINK QUARTZ

Rose Quartz or Rose Quartz is a type of quartz, which has a light pink hue (more luminous and brighter). Its color is due to a phosphate and not to an impurity. It is a stone used in the heart chakra (at the height of the heart), the energy center of our emotions. The energy of this stone dissolves the charges accumulated in the heart that prevent you from giving and receiving affection. In the face of love, sorrows, sorrows and resentments dissipate.



WATERY

MONTH PRODUCTION:  
20000KG



EXTRA

MONTH PRODUCTION:  
3000KG



REGULAR

MONTH PRODUCTION:  
10000KG





# GREEN QUARTZ

The extraction of green quartz takes place in mountains both in depth and on slopes, usually covered by a layer of earth that can be extensive or not bringing the mineral to the ground, with heavy machines the layer of soil is removed and then the extraction in blocks begins. which are then selected for each specific purpose such as semi-jewels cutting.

Green Quartz, or Aventurine, is considered the healing stone for the calming and detoxifying properties of its color. He is able to calm the body, mind and heart, increasing our patience, favoring emotional balance, a sense of well-being and also sleep.



AVERAGE  
QUALITY

MONTH PRODUCTION:  
ON DEMAND



EXTRA  
QUALITY

MONTH PRODUCTION:  
ON DEMAND





# BRONZITA

Bronzite is a member of the pyroxene group of minerals, belonging with enstatite and hypersthene to the orthorhombic series of the group. Rather than a distinct species, it is really a ferriferous variety of enstatite, which owing to partial alteration has acquired a bronze-like sub-metallic luster on the cleavage surfaces. Bronzite is highly recommended for people who are anxious, agitated or with emotional problems, as it causes a deep sense of serenity and helps us to control our emotions more.



REGULAR

MONTH PRODUCTION:  
ON DEMAND



# TOURMALINE

Black tourmaline can be formed, either magmatic or metamorphic.

Tourmalines that arise from magmatic are products of silicate fusion.

Temperatures are extremely high from 600 to 1100 °C crystallization takes place from residual melts, with iron, magnesium, chromium or enriched titanium. The fusion of these rich molten metals flows fast, and the liquid material enters channels and cavities. Metamorphic Tourmaline, however, arises when melting granite meets rock.

Black Tourmaline is an energetic protection stone against dense and negative energies. It blocks spiritual attacks, wards off ill-intentioned people and dissolves all negative vibrations.



BLACK

MONTH PRODUCTION:  
2000KG



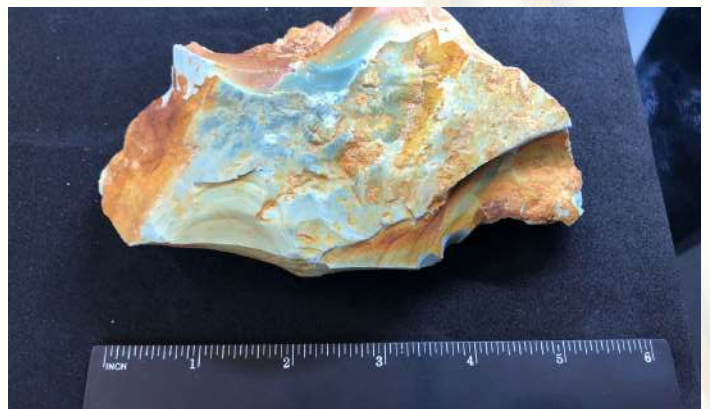
# TURQUOISE

Turquoise is a gem usually between cyan and green, generating the homonymous color. The most expensive varieties are "robin's egg blue," (sky blue). The lower ones are greenish. The turquoise that fades in color is also inferior. Turquoise is an aluminum phosphate with small amounts of copper and iron. The yolk is only slightly harder than the glass. In addition to being beautiful, the stone relaxes the entire nervous system, calms the mind and helps to verbalize thoughts. Turquoise offers an energy of peace, harmony and balance, and can also help people to properly deal with difficult life situations.



TURQUOISE

MONTH PRODUCTION:  
ON DEMAND





## TIGER EYE

A member of the quartz group, its physical and visual properties are identical or very close to the properties of a single quartz crystal.

The Tiger's Eye is a powerful stone of mental clarity, capable of elevating our intellect and helping the development of personal talents.

The Tiger's Eye's extremely positive energy creates a protective field around it and counters even the strongest attacks of dark magic and envy.



REGULAR

MONTH PRODUCTION:  
ON DEMAND



## GREEN FLUORITE

it is a common mineral, whose name comes from the Latin fluere due to its easy fusion; It is basically composed of calcium fluoride ( $\text{CaF}_2$ ) usually found in cubic crystals (the octahedral habit is also frequent), transparent to translucent, of very variable color, with perfect cleavage. It has a vitreous luster, relative density 3.18. It is the fourth term of the Mohs scale of hardness, having a hardness equal to 4. Interpenetration twins are frequent.

Rolled Green Fluorite Stone: Fluorite offers great protection, both physically and psychologically. It increases mental clarity, intuition, awareness and reduces instability. Thus, the individual starts to have a clearer, balanced and wiser vision of life.



REGULAR

MONTH PRODUCTION:  
ON DEMAND



## SERPENTINE

Serpentinite is a rock composed of one or more minerals of the serpentine group, whose name originates from the similarity of the rock's texture to that of a snake's skin. Minerals in this group, which are rich in magnesium and water, light to dark green, greasy in appearance and slippery feel, are formed by serpentinization, a hydration and metamorphic transformation of ultramafic rock in the Earth's mantle. Mineral alteration is particularly important on the seafloor at the boundaries of tectonic plates. Serpentinite is a crystal highly suitable for those who wish to increase their psychic abilities and gain greater knowledge of the spiritual aspects of existence.



REGULAR

MONTH PRODUCTION:  
ON DEMAND





# MAGNESITE

Magnesite or magnesite is a magnesium carbonate mineral ( $MgCO_3$ ). ... Magnesite occurs in veins in serpentinites or as a product of alteration of these or other magnesium-rich rocks in zones of regional or contact metamorphism.

Its natural energy tends to provide what we need, when we need it, even if we are not aware of it.



REGULAR

MONTH PRODUCTION:  
ON DEMAND



# LEPIDOLITE

Lepidolite is a phyllosilicate mineral of the mica group. It was initially called Lilalite because of its lavender coloring. It comes in shades of lilac and pink and even purple-gray. It is often found in smaller flaky aggregates and is known for its high levels of lithium.

A “transition stone”, Lepidolite assists in releasing and reorganizing old behavioral and psychological patterns, gently inducing change.



REGULAR

MONTH PRODUCTION:  
ON DEMAND



# SELENITE

Selenite or Selenite is a variety of well-crystallized gypsum with a glassy appearance. Chemically it is hydrated calcium sulfate and is a natural mineral that is found in pure rock (translucent white) and with defined striations. Selenite is known as a stone of deep peace and has an extremely pure vibration. Crystal brings serenity, tranquility and security to people and environments.



REGULAR

MONTH PRODUCTION:  
ON DEMAND



ORANGE

MONTH PRODUCTION:  
ON DEMAND

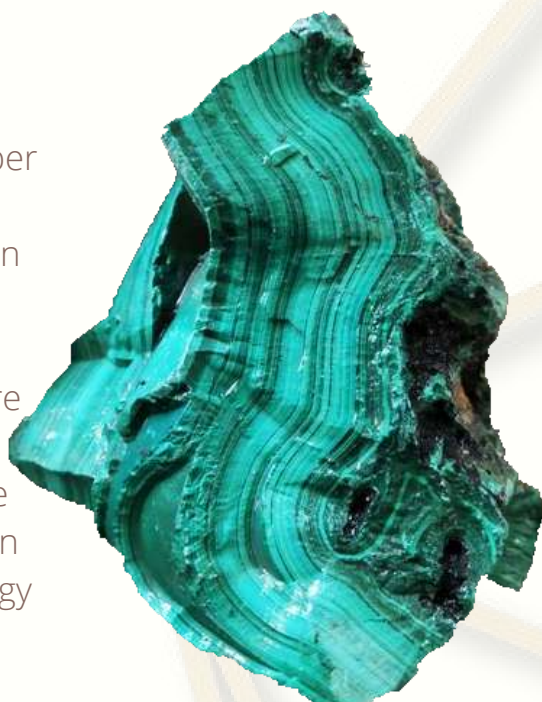




# MALACHITE

Malachite usually results from the alteration of copper ores and often occurs in association with azurite, goethite and cuprite. With the exception of the green color, the properties of malachite are very similar to those of azurite, and joint aggregates of the two minerals are often found, although malachite is more common than azurite.

It has the quality of bringing energy that needs to be worked on from the inside out, and can be placed on any painful area to work on the density of pain energy and bring out the emotional causes.



ROUGH

MONTH PRODUCTION:  
ON DEMAND



POLISHED

MONTH PRODUCTION:  
ON DEMAND



# PURPURITE

It is a mineral form, primarily as a result of the alteration of lithophyllite in granite-like pegmatite complexes. More rarely, it is also seen that it is formed from the reaction between bat guano and iron-manganese deposits in contact seawater. An extremely effective stone for psychic protection, Purpurita stimulates enlightenment. Spiritually, it opens the upper crown chakras and links them to the base, encouraging unhindered evolution, anchoring the resulting energetic shift in functional reality.



ROUGH

MONTH PRODUCTION:  
ON DEMAND



# GARNET

Garnet is the general name for members of a group of minerals with crystalline formation. The different varieties of garnet can incorporate different chemical elements in their structure, mainly calcium, magnesium, aluminum, iron<sup>2+</sup>, iron<sup>3+</sup>, chromium, manganese and titanium. It is a stone of commitment. It should be used in times of crisis as it brings order where there is chaos. Cleanses, purifies and eliminates everything that is not well. She is the guardian of true relationships. When they go through difficult times, the red color darkens and can become black.



ROUGH

MONTH PRODUCTION:  
1300KG





# AMAZONITE

Green to bluish green variety of microcline feldspar. Widely used as an ornamental stone, mainly jewelry and statuary. The preferred form of cut is cabochon as it is a non-translucent mineral and faceted cut adds little to the beauty of the gem. Its name derives from the Amazon River, because in Europe it was believed that the first samples that arrived there came from the banks of this river. Amazonite works primarily against pain in the chest area, calming the heart and nerves. Also in the back and neck region, it helps to release spasms and contractions.



AMAZONITE

MONTH PRODUCTION:  
ON DEMAND



AMAZONITE  
SALMON

MONTH PRODUCTION:  
ON DEMAND



# AGATES

Agates protect their wearer from depressions and negative influences.

Source materials: Silica, iron dioxide, calcium, sodium, manganese, chromium, traces of aluminum.



PATAGONIAN

MONTH PRODUCTION:  
ON DEMAND



CRAZY TIES

MONTH PRODUCTION:  
ON DEMAND



# JASPER

Jasper is a variety of cryptocrystalline quartz that differs from the other minerals that make up the group due to its opacity, which appears even when the thickness of the plate that is sectioned varies. Another characteristic present in this rock is the presence of impurities in its porous structure. And these impurities, which can be very different, generate very varied colors, matrices and patterns. Hence the great variety of Jaspers that we know.

Jasper is a stone that boosts its carrier's immune system, in addition, it cleanses toxic pollutants from the torso.



YELLOW  
JASPER

MONTH PRODUCTION:  
ON DEMAND



YELLOW KENIA  
JASPER

MONTH PRODUCTION:  
ON DEMAND





# JASPER

BANDED  
YELLOW  
JASPER

MONTH PRODUCTION:  
ON DEMAND



WAVE  
JASPER

MONTH PRODUCTION:  
ON DEMAND



ZEBRA  
JASPER

MONTH PRODUCTION:  
ON DEMAND



TIGER  
JASPER

MONTH PRODUCTION:  
ON DEMAND



# JASPER

## AMERICAN LANDSCAPE JASPER

MONTH PRODUCTION:  
ON DEMAND



## NET JASPER

MONTH PRODUCTION:  
ON DEMAND



## LILAC JASPER

MONTH PRODUCTION:  
ON DEMAND



## BLUE JASPER

MONTH PRODUCTION:  
ON DEMAND



# JASPER

## RED OCEANIC JASPER

MONTH PRODUCTION:  
ON DEMAND



## KENIA RED JASPER

MONTH PRODUCTION:  
ON DEMAND



## POLYCHROME JASPER

MONTH PRODUCTION:  
ON DEMAND



## BLACK JASPER

MONTH PRODUCTION:  
ON DEMAND





# JASPER

## GREEN JASPER

MONTH PRODUCTION:  
ON DEMAND



## GREEN YELLOW JASPER

MONTH PRODUCTION:  
ON DEMAND



## RED YELLOW JASPER

MONTH PRODUCTION:  
ON DEMAND



## PINK JASPER

MONTH PRODUCTION:  
ON DEMAND



# JASPER

## RED JASPER

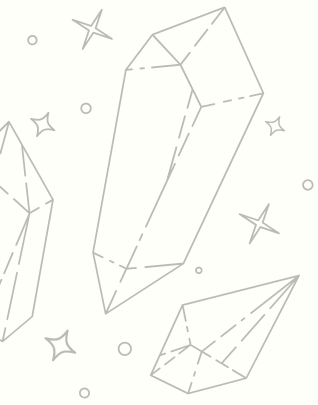
MONTH PRODUCTION:  
ON DEMAND



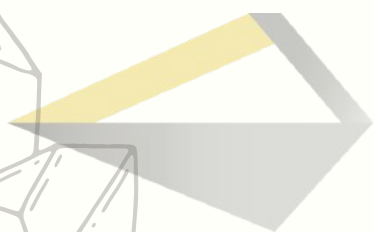
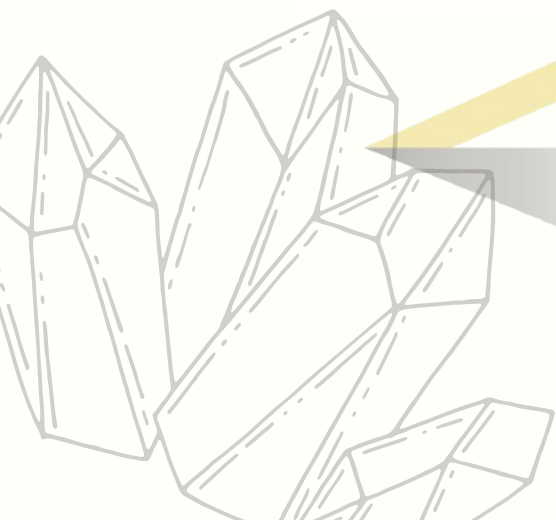
## AFRICAN RED JASPER

MONTH PRODUCTION:  
ON DEMAND





STONENERGY  
by BRM



**BRM**  
Next level mining solutions

